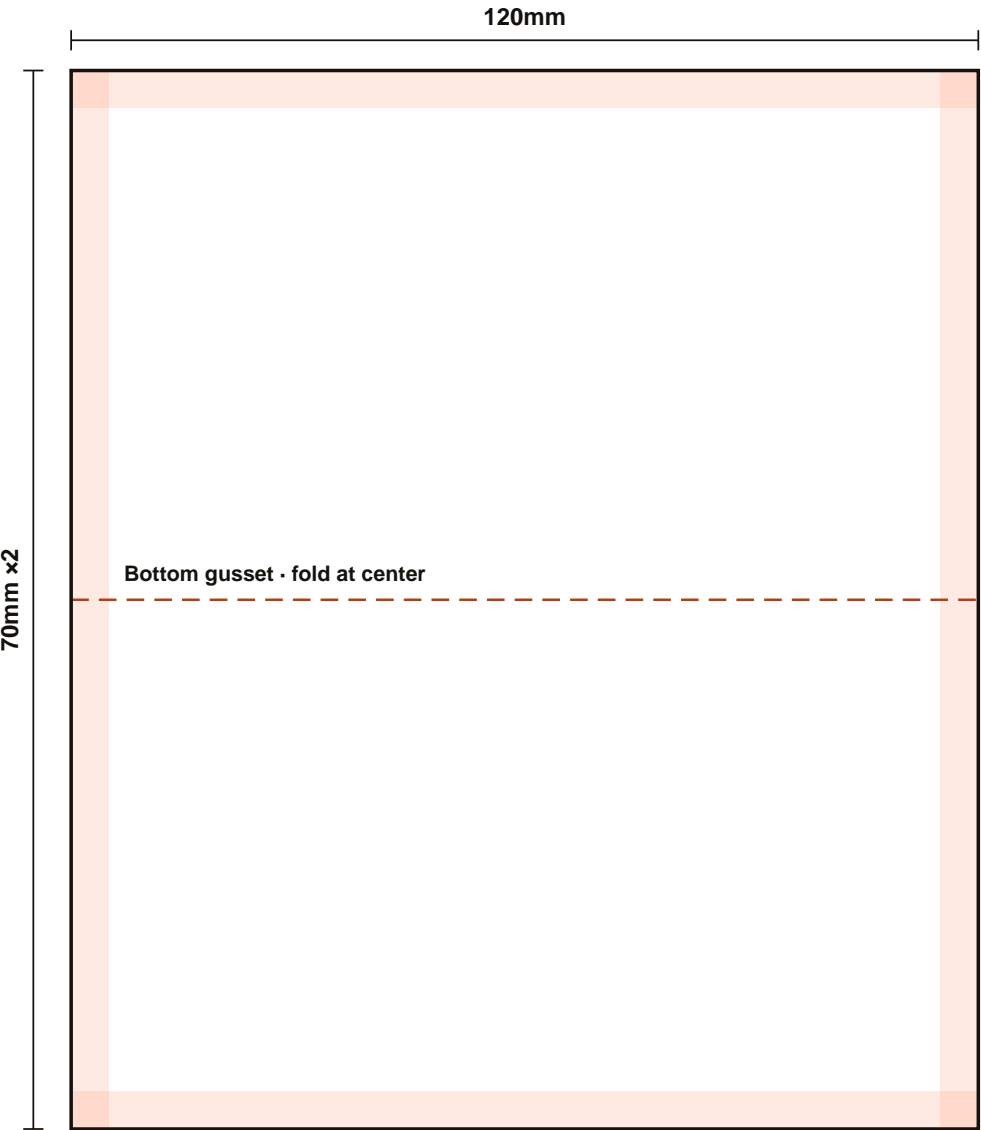
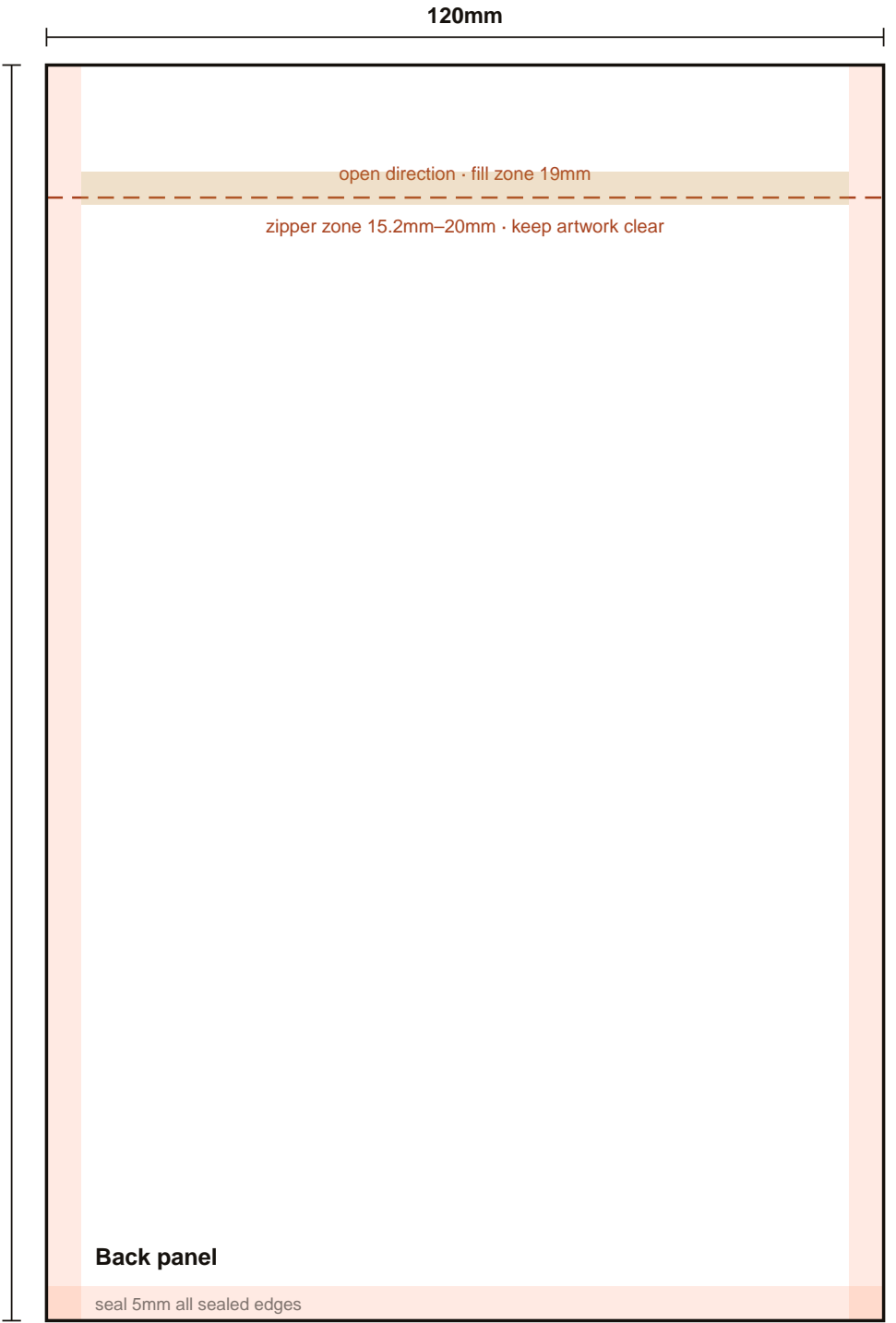
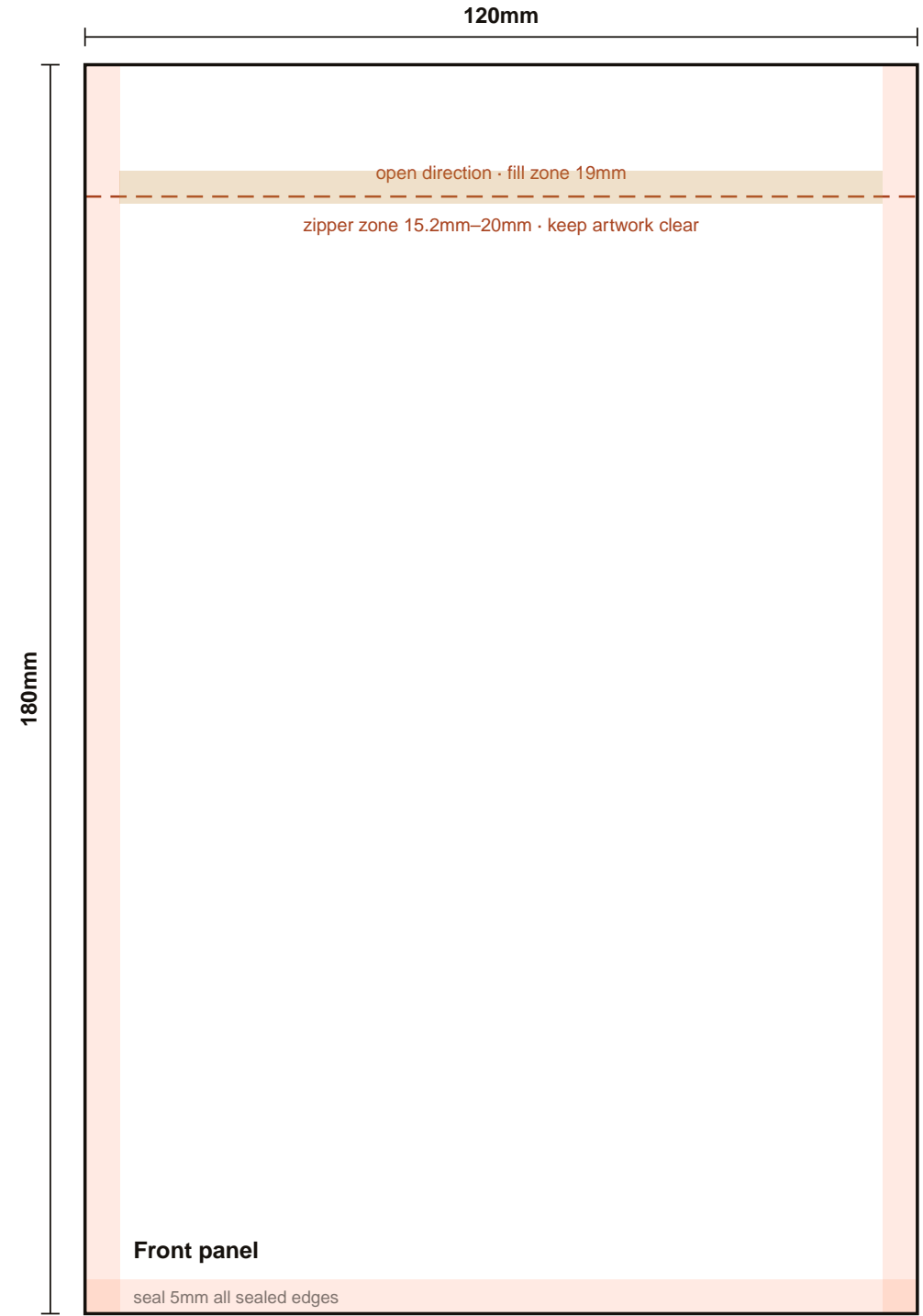


# Sparal Packaging — Stand-up pouch dieline

120mm x 180mm + 70mm · resealable zipper · seal margin 5mm

PLANNING DIELINE for artwork layout — the production dieline is confirmed at proof against tooling.

Solid = cut · dashed = fold · peach tint = seal margin · amber tint = zipper/spout keep-out · [sparalpackaging.com/tools/dieline-generator](http://sparalpackaging.com/tools/dieline-generator)



Bleed: extend artwork 3mm past all cut lines. Keep critical text 8mm inside cut lines and out of tinted zones.