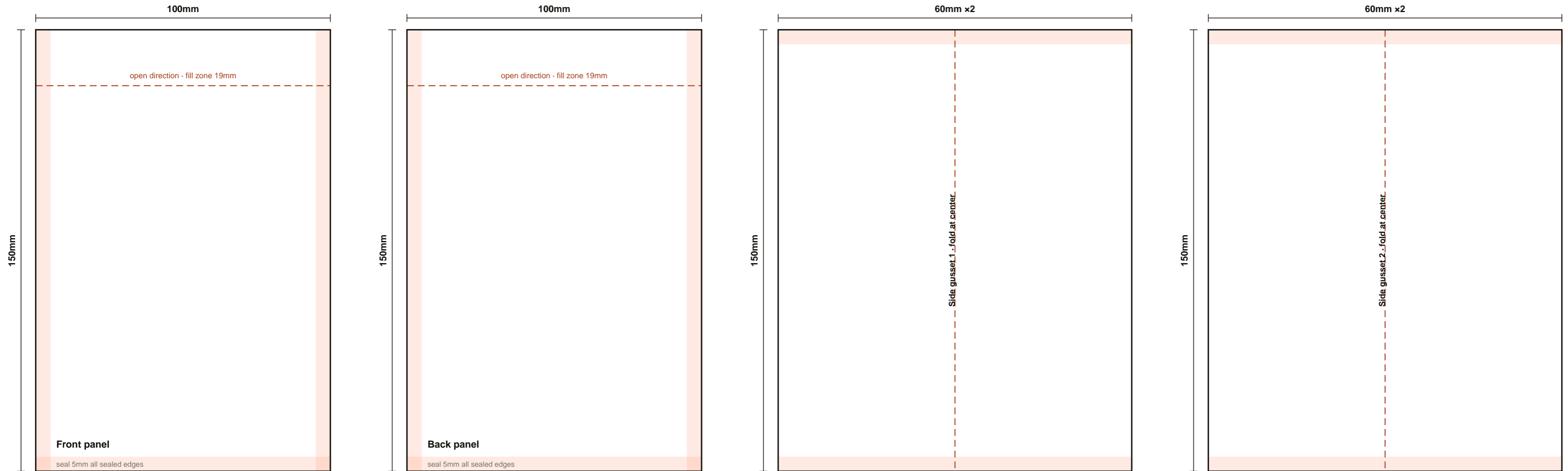


# Sparal Packaging — Side-gusset bag dieline

100mm x 150mm + 60mm · seal margin 5mm

**PLANNING DIELINE for artwork layout — the production dieline is confirmed at proof against tooling.**

Solid = cut · dashed = fold · peach tint = seal margin · amber tint = zipper/spout keep-out · [sparalpackaging.com/tools/dieline-generator](http://sparalpackaging.com/tools/dieline-generator)



Bleed: extend artwork 3mm past all cut lines. Keep critical text 8mm inside cut lines and out of tinted zones.